

The background of the entire page is an aerial photograph of a tropical island. The island features a prominent, flat-topped mountain peak in the center-left. The surrounding waters are a vibrant turquoise, showing the intricate patterns of a coral reef. The sky is bright blue with scattered white clouds. The overall scene is lush and scenic.

**MOL**  
*Charitable Trust*  
**NEWSLETTER**

April 2026

# Content

**1**

**Message from Chairperson**

**2**

**MOL Charitable Trust in Mauritius**

**3**

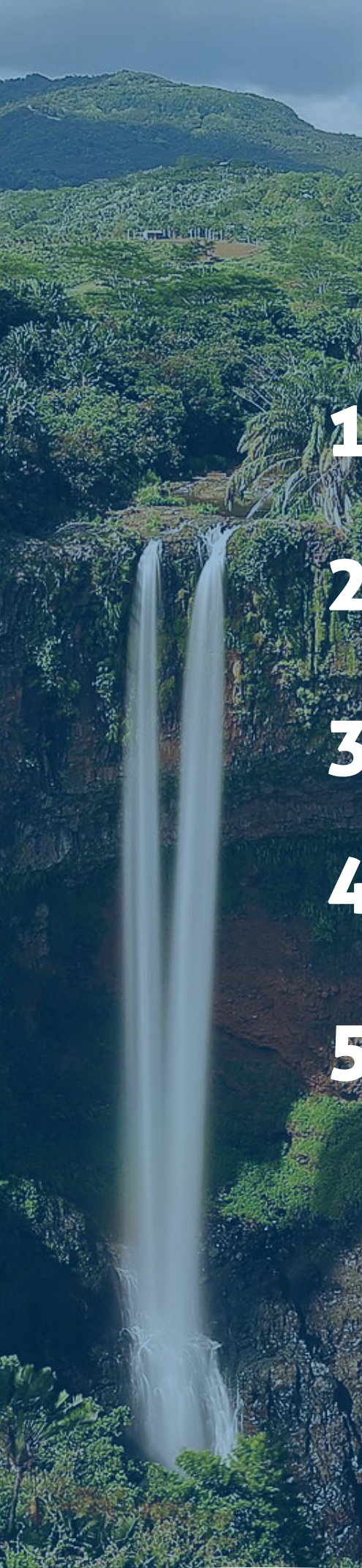
**Call for Proposal 5**

**4**

**Introduction to selected projects**

**5**

**Accompanying the Associations**





# Message From the Chairperson

**Mr. Yasuo Suzuki**  
**Chairperson,**  
**MOL Charitable Trust**

The MOL Charitable Trust marks an important milestone this year with completion of the Call for Proposal 5, bringing to an end the initial five-year cycle that was envisaged when the Trust was established in 2021.

Over these 5 years, the Trust has contributed significantly to a wide range of initiatives across Mauritius in the fields of environmental restoration and conservation and also local communities.

Since arriving in Mauritius last April, I have visited most of the organisations supported by the Trust. These visits have allowed me to witness firsthand the dedication and valuable contribution of our partners on the ground. At the same time, they have revealed opportunities to pursue better coordination and collaboration between different organisations working in related fields.

Launched in September 2025, the Call for Proposal 5 received more than 70 high-quality applications. Although proposals were accepted from across Mauritius, the Trust gave priority consideration to initiatives in the Southeast region with the aim of consolidating the Trust's contribution to the development of this region.

As the Trust completes its initial five-year cycle, we enter a new stage of reflection and renewal. Building on the strong foundations established since 2021, the Trust will begin refining its approach - with greater emphasis placed on the marine environment, coastal communities, and skills development - while seeking to foster active collaboration and support amongst the different organisations and initiatives we will accompany to unlock synergies and create additional value and long-term sustainability. This evolution will deepen the Trust's contribution to the marine environment and coastal communities in Mauritius while remaining closely aligned with the broader sustainability objectives of the MOL Group.

**Yasuo Suzuki**  
*Chairperson*  
MOL Charitable Trust



## 2. MOL Charitable Trust in Mauritius

The MOL Charitable Trust (MCT) was officially established in June 2021 to support local NGOs in the implementation of social, educational and environmental projects in Mauritius. Projects supported by the Trust are implemented over a maximum period of one year, with funding of up to Rs 1 million per project. Each initiative must contribute to one or more of the Trust's ten statutory objectives, with particular emphasis on the protection of coastal ecosystems and the empowerment of vulnerable communities.

The Trust was created following the establishment of a local office by MOL in 2020 through MOL (Mauritius) Ltd. At that time, two complementary initiatives were launched: the MOL Charitable Trust (MCT) and the MOL Mauritius International Fund for Natural Environment Recovery and Sustainability (MMIF), supported by a combined envelope of 800 million yen. While the MCT operates through structured Calls for Proposals, the MMIF provides assistance to projects contributing to environmental recovery and community resilience under a separate governance structure administered by a Trustee and supported by a Steering Committee.

The MCT is administered by an Enforcers Committee composed of seven members, including four members with responsibilities related to Mauritius and three independent Mauritian nationals. This governance model ensures local oversight and a transparent, rigorous project selection process aligned with national priorities and the broader commitments of the MOL Group.

The Trust operates in line with the MOL Group's Social Contribution Policy, as part of the Group's sustainability management framework, and in alignment with the objectives of BLUE ACTION 2035.

In Mauritius, the Trust supports projects in the MOL Group's Social Contribution priority areas - Marine Environment, Next-generation Human Resources Development, and Addressing Local Community Challenges - contributing to sustainable and inclusive growth.

As the Trust completes its initial five-year cycle, its role will continue to evolve in line with local needs and the sustainability framework of the MOL Group. This next phase will focus on reinforcing long-term impact, responsible governance and continued engagement with local partners.





### 3. Call for Proposal 5

The Call for Proposal 5 was launched in September 2025 and generated strong interest across Mauritius, with more than 70 applications submitted by associations, educational institutions and community-based organisations representing diverse areas of intervention. This level of engagement reflects the continued relevance of the Trust's mandate and the commitment of civil society to addressing concrete local needs.

While applications were received from all regions of the island, particular attention was given to initiatives in the South-East region. This regional emphasis aimed to encourage closer collaboration among organisations operating within the same geographic space and to reinforce the Trust's contribution to the development of the southeast region.

All project proposals underwent an independent evaluation process to ensure transparency, fairness and alignment with the Trust's statutory objectives. Shortlisted applications were reviewed in consultation with the Local Enforcers Committee, whose role is to provide oversight and ensure compliance with governance standards. Final decisions were made by the MOL Charitable Trust Enforcers following this formal assessment process. Selected organisations are required to enter into a Memorandum of Understanding setting out clear implementation obligations, reporting requirements and accountability standards. Funding is disbursed in stages, subject to satisfactory progress reporting and compliance with agreed deliverables. Projects are monitored by an independent entity reporting to the Trust.

Following this process, 13 projects were selected under CFP5. These initiatives fall across four main focus areas: Environment, Education, Social and Empowerment - reflecting the breadth of the Trust's mandate and its continued commitment to structured and accountable support.

CFP5 marks the completion of the Trust's first five-year cycle of Calls for Proposals initiated in 2021. The Trust will maintain its engagement in Mauritius under an evolving framework aimed at strengthening sustainability, reinforcing governance and promoting long-term value for local communities.

A group of people are silhouetted against a bright sunset sky. They are standing with their arms raised in a gesture of celebration or achievement. The sun is low on the horizon, creating a warm, golden glow. The background shows a distant landscape with some structures and trees.

# *4. Introduction to selected projects*

Marine  
Environment

## *A. Environmental Projects*

*Environmental protection remains a central pillar of the MOL Charitable Trust's mandate in Mauritius. Through CFP5, the Trust supports initiatives that combine field-based ecological interventions, scientific research, and coordinated community engagement. The selected projects address marine biodiversity degradation, plastic pollution, and environmental data gaps, contributing to long-term ecosystem resilience and informed conservation practices aligned with the Trust's statutory objectives.*



## 1. Setting up a Voluntary Marine Conservation Area



 **Location:** Beau Champ and Bel Ombre



**Area of focus:** Coral Reefs

### Coral Garden Conservation

This project seeks to reduce coral degradation by establishing a defined voluntary marine conservation area supported by reef restoration activities. Proposed actions include promoting passive and natural reef restoration techniques, transplanting coral fragments onto degraded reef sites, and conducting systematic reef monitoring to assess ecological recovery over time.

This project seeks to reduce coral degradation by establishing a defined voluntary marine conservation area supported by reef restoration activities. Proposed actions include promoting passive and natural reef restoration techniques, transplanting coral fragments onto degraded reef sites, and conducting systematic reef monitoring to assess ecological recovery over time.





## 2. Sea Turtle Attitude Phase 3: Monitoring Abundance and Nesting Behaviour



**Location:** South-East and North regions

**Area of focus:** Other

### Green Attitude Foundation

This third phase of the Sea Turtle Attitude programme focuses on scientific monitoring of sea turtle abundance and behaviour. Key actions include conducting systematic sea turtle surveys, collecting field data to track population trends, and engaging volunteers in organised conservation monitoring activities.

The project also incorporates awareness initiatives designed to strengthen understanding of marine biodiversity protection among coastal communities. Implemented in the south-east, from Blue Bay Marine Park to surrounding coastal areas, and extending to northern zones, the initiative enhances data-driven conservation while reinforcing community participation in marine protection efforts.

The project aligns with SDGs including Life Below Water, Climate Action, and Sustainable Cities and Communities.





### 3. Reducing and recycling plastic waste



**Location:** Pointe Jérôme, Mahébourg



**Area of focus:** Other

### Precious Plastic

This initiative addresses plastic pollution through structured clean-up operations and recycling-based awareness activities. Proposed actions include organised beach clean-ups, environmental awareness sessions targeting youth and community members, and the transformation of collected plastic waste into reusable materials through local recycling processes.

Operating from the Youth Centre at Pointe Jérôme in Mahébourg, the project aims to reduce plastic leakage into marine ecosystems while promoting responsible consumption and waste reduction practices. By linking practical waste recovery with circular economy education, the initiative contributes to cleaner coastal environments and long-term behavioural change.

The project supports SDGs such as Responsible Consumption and Production, Climate Action, and Life Below Water.





## 4. The Mauritius Blue Carbon Inventory: A Geospatial Approach of Coastal Ecosystems



**Location:** Université des Mascareignes, Bel Air Campus



**Area of focus:** Other, Mangroves

### Université des Mascareignes

This research-driven project seeks to establish a high-resolution geospatial inventory of blue carbon ecosystems in Mauritius. The five proposed actions include establishing a national mapping framework for blue carbon habitats, conducting field validation surveys, quantifying carbon sequestration potential, developing analytical models for vulnerability assessment, and disseminating findings through academic and stakeholder engagement platforms.

Implemented through the Université des Mascareignes at its Bel Air Campus with national scope, the project strengthens scientific capacity while informing evidence-based environmental policy and conservation strategies. The initiative contributes to Climate Action, Life Below Water, and Quality Education, reinforcing research-led environmental resilience.



Next Generation  
Human Resource  
Development

## ***B. Educational Projects***

Education remains a key lever for long-term social resilience and community development. Through CFP5, the MOL Charitable Trust supports initiatives that strengthen academic support systems, promote skills development, and create structured learning environments for children and youth. The selected projects focus on addressing barriers to education, enhancing extracurricular engagement, and equipping beneficiaries with practical competencies that support their personal and professional development.



### 5. After School Project 2026



**Location:** Beau Vallon Village

**Area of focus:** Education

### Bonheur Associé Aux Enfants

The project focuses on supporting approximately 150 vulnerable children facing food insecurity and limited academic assistance. Proposed actions include the preparation and distribution of daily balanced lunch packs throughout the school year, alongside structured after-school academic support sessions aimed at improving attendance and learning continuity.

By addressing both nutritional and educational needs, the project seeks to create a stable environment that enables children to focus on their studies and improve attendance. Implemented in Beau Vallon and surrounding areas, the initiative directly supports vulnerable students while contributing to SDGs such as Quality Education, Zero Hunger, and Reduced Inequalities.





## 6. *Skippers Training Project at Grande Rivière Noire and in the South-East region*



**Location:** Grande Rivière Noire and Mahébourg

**Area of focus:** Education

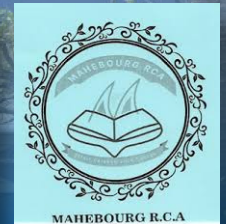
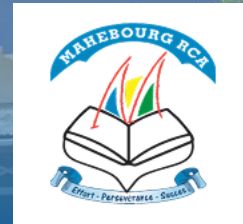
### *Kolektif Rivier Nwar*

This initiative aims to equip youth with accredited professional training in maritime skills, enhancing employability in coastal regions. The project proposes delivering defined training programmes, including certified skipper training, and facilitating access to recognised qualifications.

Through practical instruction and professional development pathways, the initiative seeks to strengthen technical competencies and expand employment opportunities for young participants. Implemented in Grande Rivière Noire and Mahébourg, the project supports youth integration into the maritime sector while reinforcing local economic participation.

By promoting structured vocational training, the initiative contributes to SDGs such as Quality Education and Decent Work & Economic Growth.





## 7. Construction of Outdoor Shelter



**Location:** Mahébourg RCA School

**Area of focus:** Education

### Mahebourg R.C.A

This project involves the construction of a new outdoor shelter within the school compound to improve learning and recreational conditions for students. The proposed actions include building a covered structure will designed to support enhance outdoor activities in both wet and vey hot conditions, promote social interaction, and provide a safe environment for school gatherings.

By enhancing infrastructure within the school premises, the initiative seeks to improve students' daily learning experience and create a more conducive educational setting. Implemented at the Mahébourg RCA School compound in the South-East, the project directly benefits enrolled students and contributes to improved educational facilities.

The initiative aligns with SDGs including Quality Education and Sustainable Cities and Communities.





## 8. After-school and Saturday educational and artistic programmes



**Location:** Cité La Chaux, Mahébourg

**Area of focus:** Education

### Cirque Cité La Chaux

This project delivers organised after-school and Saturday educational and artistic programmes targeting children and youth in Cité La Chaux. Activities include artistic workshops, educational reinforcement sessions, and social development exercises designed to build confidence, discipline, and teamwork.

By integrating creative arts with structured educational support, the initiative aims to strengthen academic engagement while fostering personal development. Implemented in Mahébourg, the programme provides a safe and constructive space for youth participation, reducing exposure to social risks and enhancing community cohesion.

The project contributes to SDGs such as Quality Education and Reduced Inequalities.



4 QUALITY EDUCATION



10 REDUCED INEQUALITIES



## 9. Les Boulbous Play Centre



**Location:** Cité Ville Neuve,  
Mahébourg

**Area of focus:** Education

### *Ti Rayons Soleil*

This initiative focuses on daily developmental activities aimed at promoting inclusion and early childhood education. Proposed actions include structured educational sessions, developmental play activities, and support mechanisms tailored to children requiring additional attention.

Through consistent daily engagement and inclusive programming, the project seeks to strengthen foundational learning skills while fostering social integration. Implemented in Mahébourg, Cité Ville Neuve, the initiative supports early childhood development and inclusive education practices.

The project aligns with SDGs such as Quality Education and Reduced Inequalities.



Addressing Local  
Community  
Challenges

## ***C. Social Projects***

The Social focus area under CFP5 supports initiatives that address immediate community needs while strengthening social infrastructure and inclusion. The selected projects aim to improve living conditions, reinforce family support mechanisms, and enhance access to safe and inclusive public spaces. Through practical interventions and community engagement, these initiatives contribute to social stability and improved quality of life within vulnerable areas.



## 10. School Support for children of *Résidence Olivia*



**Location:** Olivia, Belle Rivière, GRSE



**Area of focus:** Education, Community development

### *Association Solidarité Mamans*

This project aims to improve school attendance and well-being among children from vulnerable households in the South-East region. Recognising that socio-economic instability often impacts educational continuity, the initiative combines parental engagement with monitoring and support mechanisms.

Proposed actions include ongoing awareness meetings with parents, regular follow-up on children's attendance, and coordination with families to address challenges affecting school participation. By reinforcing parental responsibility and promoting consistent school attendance, the project seeks to strengthen children's educational stability and overall development.

Implemented in Olivia, Belle Rivière and surrounding areas of Grand Port, the initiative supports vulnerable families while contributing to SDGs such as No Poverty, Quality Education, and Reduced Inequalities.





## 11. Improving the parks at Mahébourg Waterfront and Résidence La Chaux



**Location:** Mahébourg Waterfront



**Area of focus:** Other, Community development

### The District Council of Grand Port

This project focuses on enhancing public recreational infrastructure at the Mahébourg Waterfront through the supply, fixing, and commissioning of children's play equipment. The initiative seeks to improve the safety, accessibility, and overall quality of public spaces used by families and children.

Proposed actions include upgrading existing park facilities and installing new play structures designed to create a safer and more inclusive environment. By improving access to structured recreational spaces, the project contributes to community well-being and social cohesion.

Implemented at the Mahébourg Waterfront in the South-East region, the initiative directly benefits local residents and visiting families while supporting SDGs such as Sustainable Cities and Communities and Reduced Inequalities.



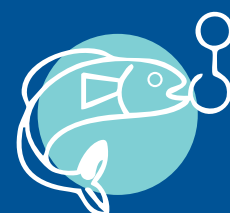
Addressing Local  
Community  
Challenges

## ***D. Empowerment Projects***

The Empowerment focus area under CFP5 supports initiatives designed to enhance autonomy, employability, and long-term socio-economic resilience among vulnerable populations. These projects prioritise skills development, capacity-building, and structured follow-up mechanisms to ensure sustainable impact. By strengthening individual agency and fostering self-reliance, the selected initiatives contribute to more resilient households and communities.



## 12. Empowering Coastal & Vulnerable Communities through Sustainable Fisheries, Vegetable Production & Food Processing



**Location:** Mare Tabac

**Area of focus:** Education, Community development, Fisheries

### RESPECT

This project seeks to strengthen economic resilience among vulnerable coastal communities through structured skills development and training initiatives. Proposed actions include renovating and equipping the training centre at the RESPECT Greenhouse Complex, delivering targeted training sessions, and raising awareness on income-generating opportunities.

The initiative combines practical vocational training with mentoring to enhance employability and entrepreneurial capacity among beneficiaries. By improving access to training infrastructure and providing learning pathways, the project aims to promote financial autonomy and community-level resilience.

Implemented in the South-East region, the initiative targets approximately 10 beneficiaries while contributing to SDGs such as No Poverty, Decent Work and Economic Growth, and Reduced Inequalities.





### 13. Revey Twa Fam & Revey Twa Zom



**Location:** Mahébourg, Grand Port



**Area of focus:** Education, Community development

#### Revey Twa Fam

This project continues the organisation's coordinated empowerment programme targeting vulnerable women and men in the Mahébourg region. Proposed actions include providing training to 15 vulnerable women, delivering life-skills development sessions, and facilitating pathways to employment and income-generating activities.

Through vocational training, psychosocial support, and systematic follow-up, the initiative seeks to strengthen participants' autonomy and long-term socio-economic stability. By combining practical skills development with personal empowerment, the project supports sustainable reintegration and improved household resilience.

Implemented in Mahébourg, Grand Port, the initiative directly benefits enrolled participants and contributes to SDGs such as Gender Equality, No Poverty, and Decent Work and Economic Growth.



An aerial photograph of a small, white motorboat on clear, turquoise water. The boat is viewed from above, showing its interior with some equipment and a person. The water is very clear, revealing the seabed below. The image is positioned on the left side of the page, partially overlapping the text area.

## 5. Accompanying the Associations

---

Beyond financial support, the MOL Charitable Trust places strong emphasis on structured accompaniment, governance and long-term sustainability of supported initiatives. Selected organisations enter into a Memorandum of Understanding defining clear implementation obligations, reporting requirements and accountability standards throughout the duration of their project.

Funding is disbursed in stages and remains subject to satisfactory progress reporting and compliance with agreed deliverables. Projects are monitored by an independent entity reporting to the Trust, ensuring transparency and objective evaluation of implementation outcomes. This monitoring framework reinforces responsible management and contributes to the credibility of the Trust's support model.

The Enforcers Committee continues to oversee the implementation phase of supported projects through periodic review and engagement with beneficiary organisations. This formal follow-up ensures adherence to agreed objectives, responsible use of funds and alignment with the Trust's governance principles.

Particular emphasis attention is also given to facilitate encouraging dialogue and encourage collaboration among organisations operating within the same geographic areas and technical fields., especially in the Mahébourg region. By fostering coordination and knowledge-sharing among stakeholders, the Trust seeks to enhance collective impact and strengthen local networks.

As the Trust enters a new phase following the completion of its initial five-year cycle, this accompanying role becomes increasingly central to reinforcing empowerment, sustainability, accountability and long-term impacts value for communities.

