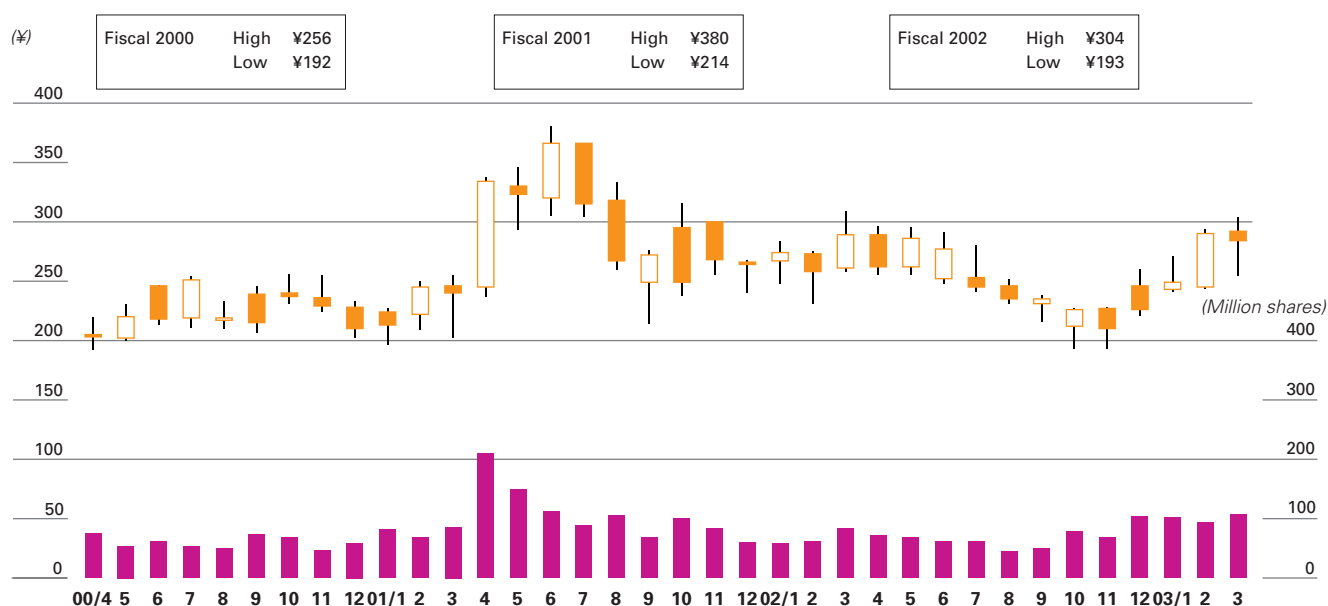


Shareholder Information

Capital:	¥64,915,351,028
Head office:	1-1, Toranomon 2-chome, Minato-ku, Tokyo 105-8688, Japan
Number of MOL employees:	989
Number of MOL Group employees: (The parent company and consolidated subsidiaries)	7,161
Total number of shares authorized:	3,154,000,000
Number of shares issued:	1,205,410,445
Number of shareholders:	127,811
Shares listed in:	Tokyo, Osaka, Nagoya, Fukuoka, Sapporo, Frankfurt
Share transfer agent:	UFJ Trust Bank Limited 4-3, Marunouchi 1-chome, Chiyoda-ku, Tokyo 100-0005, Japan
Communications materials:	Annual Reports (English/Japanese) News Releases (English/Japanese) Website (English/Japanese) Quarterly Newsletter Open Sea (English) Monthly Newsletter Unabara (Japanese) Environmental Report (English/Japanese)

As of March 31, 2003

Stock price range (Tokyo Stock Exchange) and volume of stock trade



This annual report was printed entirely on recycled paper with soy-based ink.