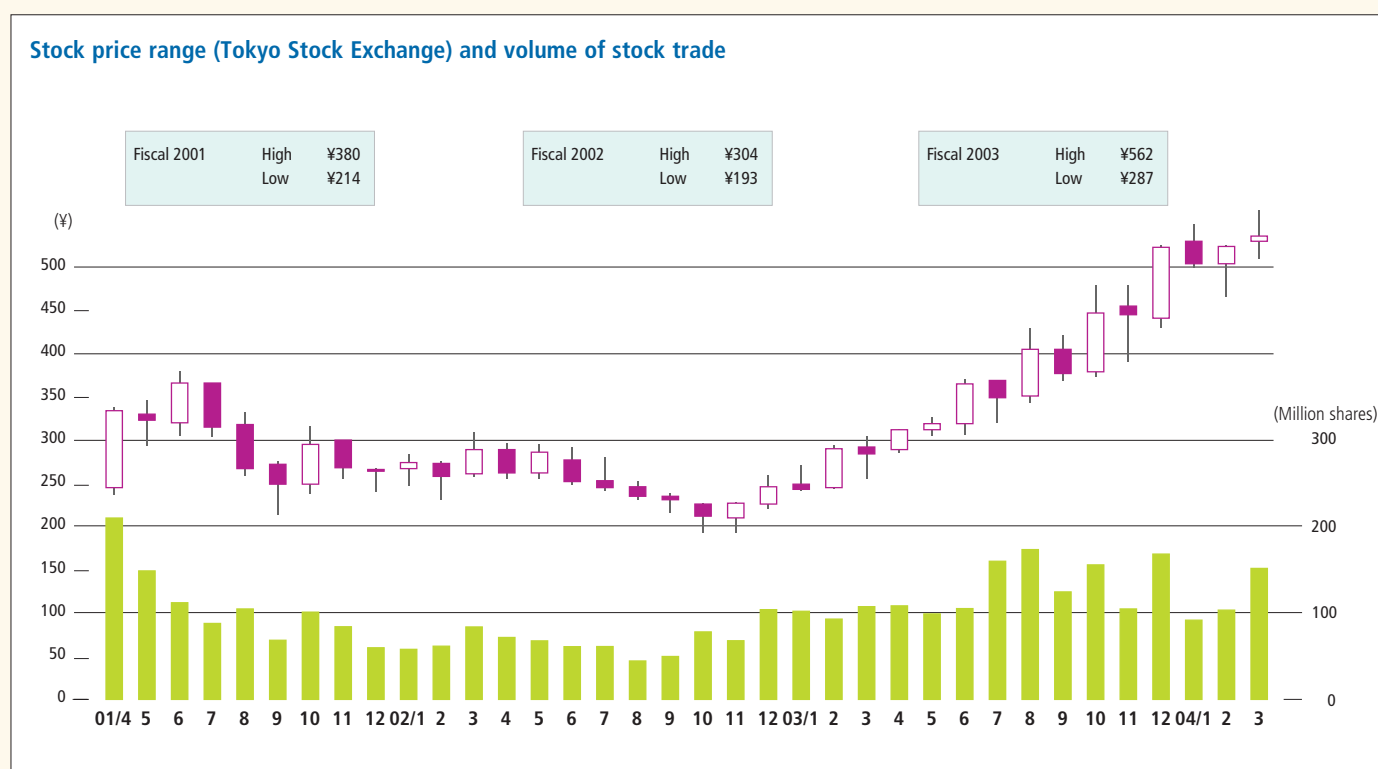


## Shareholder Information

|  |   |
|--|---|
| <b>Capital:</b>  | ¥64,915,351,028   |
| <b>Head office:</b>  | 1-1, Toranomon 2-chome, Minato-ku, Tokyo 105-8688, Japan  |
| <b>Number of MOL employees:</b>  | 946   |
| <b>Number of MOL Group employees:<br/>(The parent company and consolidated subsidiaries)</b> | 7,033   |
| <b>Total number of shares authorized:</b>  | 3,154,000,000   |
| <b>Number of shares issued:</b>  | 1,205,410,445   |
| <b>Number of shareholders:</b>   | 118,437   |
| <b>Shares listed in:</b>   | Tokyo, Osaka, Nagoya, Fukuoka, Sapporo, Frankfurt   |
| <b>Share transfer agent:</b>   | UFJ Trust Bank Limited<br>4-3, Marunouchi 1-chome, Chiyoda-ku, Tokyo 100-0005, Japan  |
| <b>Communications materials:</b>   | Annual Reports (English/Japanese)<br>News Releases (English/Japanese)<br>Website (English/Japanese)<br>Quarterly Newsletter Open Sea (English/Web site)<br>Monthly Newsletter Unabara (Japanese)<br>Environmental Report (English/Japanese) |

As of March 31, 2004



This annual report was printed entirely on recycled paper with soy-based ink.